

78f - Fan Clutch Catalog



**SPITZ HEAVY DUTY
PITTSBURGH TRUCK PARTS
CASTLE TRUCK PARTS**



heavydutyusa.com

Qbrand.com

December 16, 2015



[Printer Version](#)

Counter Sales (724) 382-5887
National Accounts 1-800-525-0988

DriveMaster	S or HT/S
<p>Post-2000, Spring Engaged Clutch, All Models, Part Number is on Unit, Sold Exchange <i>DriveMaster is a registered trademark of Horton Inc.</i></p>	<p>Pre-2000, Air Engaged Clutch, All Models, Part Number is on Unit, Sold Exchange</p>
	

993653T(BEP) Thermal Switch 195 Open **[NO]**, 993605(BEP) Thermal Switch 195 Closed **[NC]**
 993654T(BEP) Thermal Switch 200 Open **[NO]**, 993606(BEP) Thermal Switch 200 Closed **[NC]**
 993655T(BEP) Thermal Switch 205 Open **[NO]**, 993607(BEP) Thermal Switch 205 Closed **[NC]**
 993282S(BEP) Three Way Solenoid Valve, NO-NC 125NPTF, 12VDC [CO]
 993315 NC use 993282S

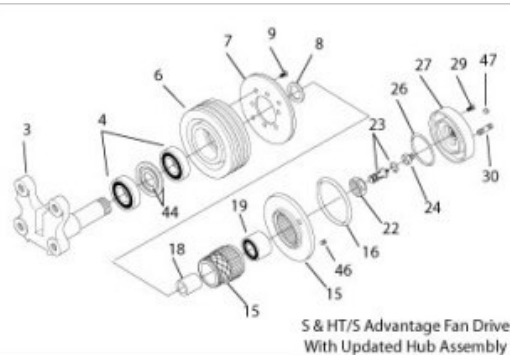
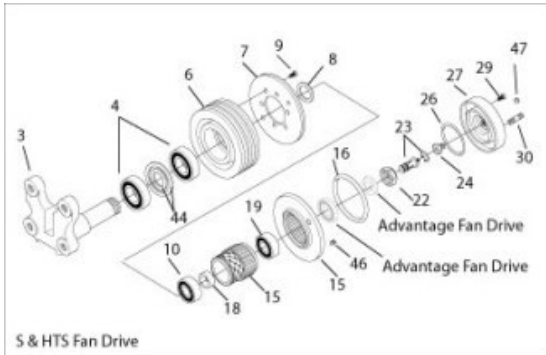
NO - Normally Open. Switch contacts are open (not conducting)
NC - Normally Closed. Switch contacts are closed (conducting)
CO - Can be connected either Normally Open or Normally Closed (3 terminals or wires).

994314(BEP) S-Type Major Kit	994315(BEP) HT/S-Type Major Kit
<p>(1pr.) Sheave Bearing, (1) Friction Facing, (6) S Cap Screws, (1) Large O-Ring Seal, (1) Locknut, (1) Cartridge Assembly, (1) Face Seal Assembly, (1) Small O-Ring Seal, (8) Cap Screws, (1) O-Ring Lube, (1) System Sentry™ and (1) Umbrella Check Valve.</p>	<p>(1pr.) Sheave Bearing, (1) Friction Facing, (8) HT/S Cap Screw, (1) Large O-Ring Seal, (1) Locknut, (1) Cartridge Assembly, (1) Face Seal Assembly, (1) Small O-Ring Seal, (8) Cap Screws, (1) O-Ring Lube, (1) System Sentry™ and (1) Umbrella Check Valve.</p>
	

994305(BEP) HT/S Super Kit

Should be installed if the bearings are running rough or if the fan drive needs to be completely rebuilt due to excessive wear.

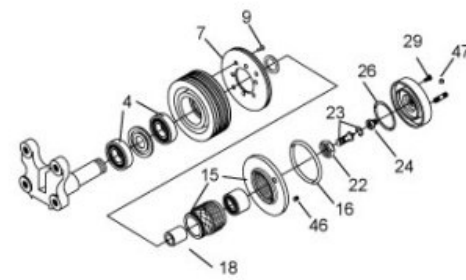
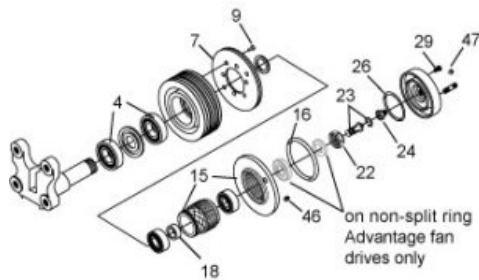
#4 Sheave Bearing qty 2, #7 Friction Facing qty 1, #9 Socket Head Cap Screw qty 8, #15 Piston Friction Disc (includes item 46) qty 1, #16 O-Ring qty 1, #17 Splined Hub Assembly qty 1, #18 Bearing Spacer qty 1, #19 Hub Bearing qty 1, #20 Retaining Ring qty 1, #22 Lock Nut qty 1, #23 Cartridge Assembly qty 1, #24 Face Seal Assembly qty 1, #26 O-Ring (small) qty 1, #29 Socket Head Cap Screw, qty 8, #46 System Sentry (included in item 15), #47 Umbrella Valve qty 1,
Items included but not pictured: O-Ring Lubricant, Spline Lube and Spline Lube Brush.



994307(BEP) S-Type Super Kit

Should be installed if the bearings are running rough or if the fan clutch needs to be completely rebuilt due to excessive wear.

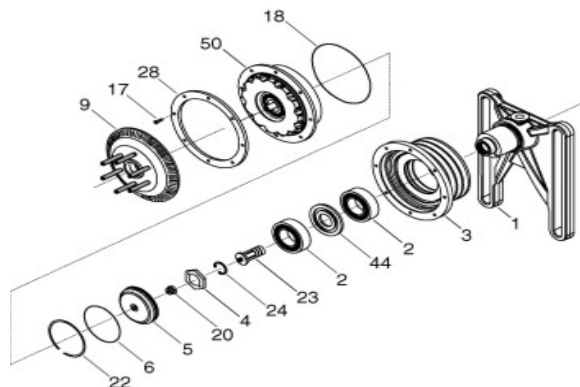
#4 Sheave Bearing qty 2, #7 Friction Facing qty 1, #9 Socket Head Cap Screw qty 6, #15 Piston Friction Disc (includes item 46) qty 1, #16 O-Ring qty 1, #22 Lock Nut qty 1, #23 Cartridge Assembly qty 1, #24 Face Seal Assembly qty 1, #26 O-Ring (small) qty 1, #29 Socket Head Cap Screw, qty 8, #46 System Sentry (included in item 15), #47 Umbrella Valve qty 1,
Items included but not pictured: O-Ring Lubricant, Spline Lube and Spline Lube Brush.



994985(BEP) DriveMaster Super Kit

Should be installed if the bearings are running rough or if the DriveMaster fan drive needs to be completely rebuilt due to excessive wear.

#2 - Bearing qty 2, #4 - Bearing Nut, qty 1, #5 - Air Chamber Cap, qty 1, #6 - O-Ring Seal, qty 1, #9 - Fan Mounting Disc/Studs, qty 1
 #17, Button Head Screws, qty 8, #18, Air Chamber Seal, qty 1, #20, Face Seal, qty 1 #22, Retaining Ring, qty 1,
 #23, Air Cartridge Assembly, qty 1, #24, Retaining Ring, qty 1, #50 - Spring Housing/Piston, qty 1
 Items included but not pictured: T55 Torx Plus Driver, O-Ring Lubricant, and Cage Nut.



BENDIX STYLE
 (BEP) Part Number is on Unit
 Sold Exchange



BORG-WARNER/ KYSOR STYLE

8001X (BEP)	Clutch	FRONT AIR	Part Number is on Unit	Sold Exchange
850?X (BEP)	Clutch	REAR AIR	Part Number is on Unit	Sold Exchange

**8000SKL(BEP) Front Air Seal
& Lining Kit**



**8500SKL(BEP) Rear Air Seal
& Lining Kit**



WHAT'S  NEXT